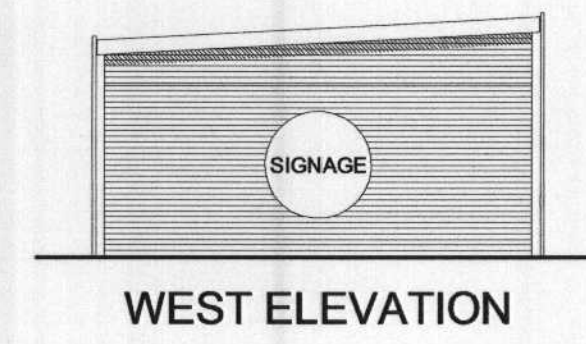
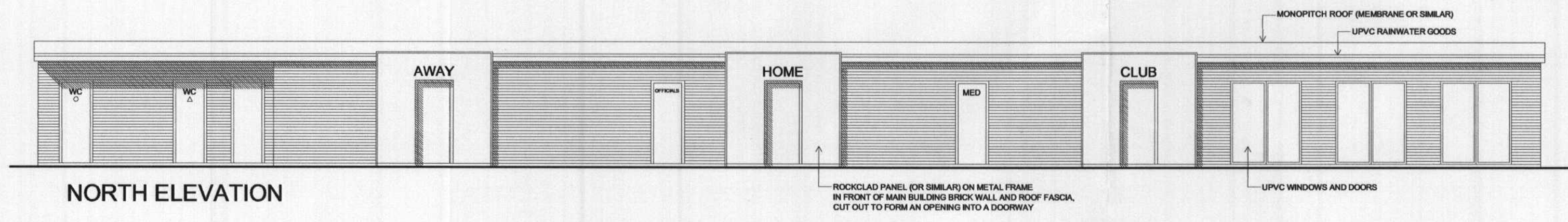
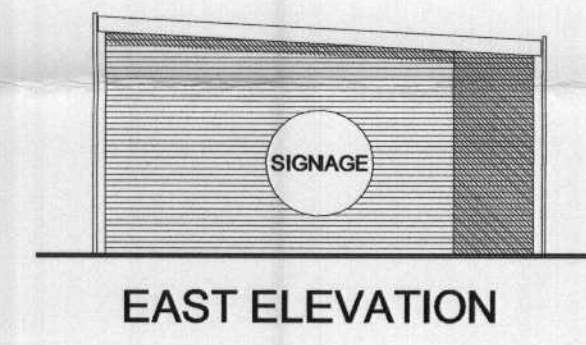
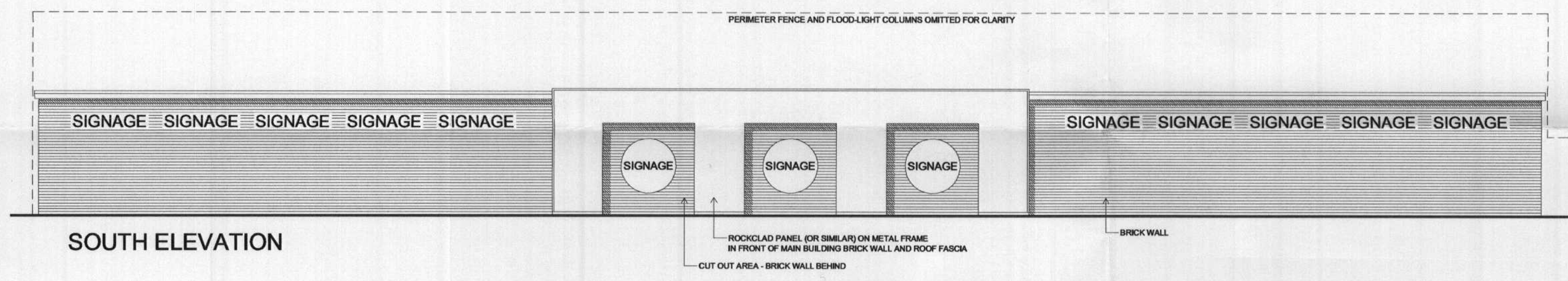
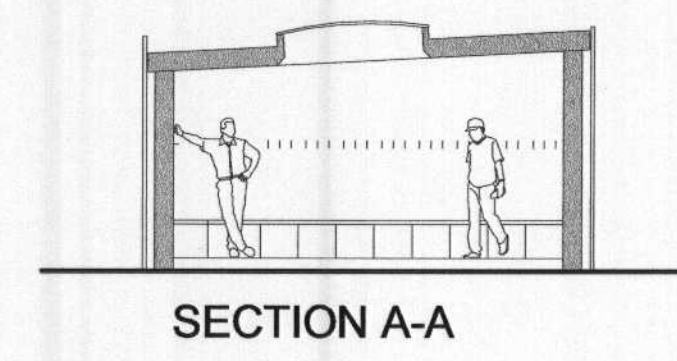
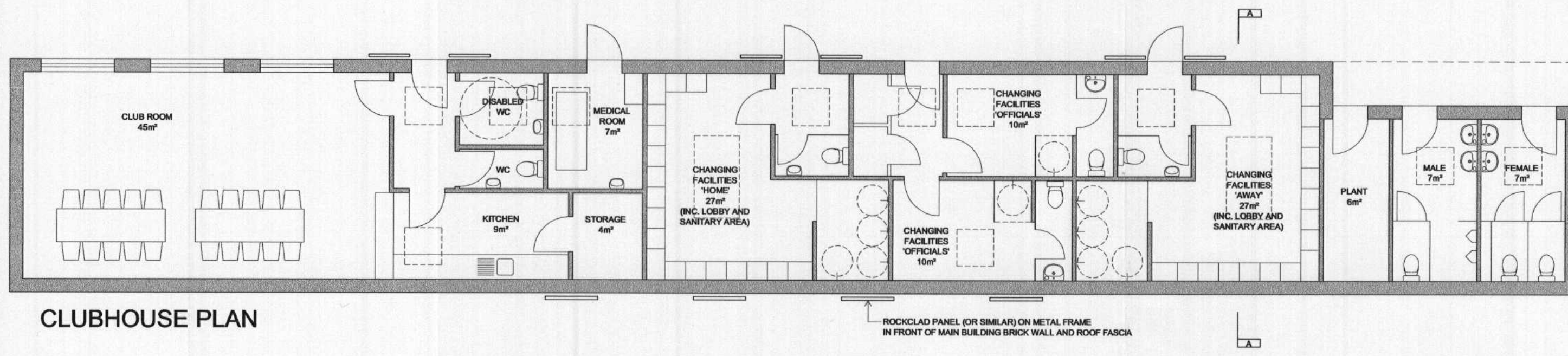
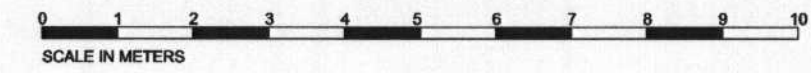


This drawing, the work of architecture to which it relates and any notes relating to it are protected by copyright. To the extent that this is a design document it is, in addition, protected by design right. All rights in it are reserved. It is provided for your information about the application only. No part of it or any design to which it relates may be reproduced in any form or any means without the prior written permission of Fairview New Homes Limited, except as expressly permitted by law. The doing of any unauthorised act in relation to it may result in both a civil claim and criminal prosecution.  
 © Crown Copyright 2010. All rights reserved. License number 100020448



**Fairview**  
**NEW HOMES Ltd.**

Salter Road  
 Rotherhithe  
 Proposed Clubhouse Plans

Scale 1:100 @ A2  
 Date January 2014  
 Drawn ML

FAIRVIEW NEW HOMES Ltd.  
 50 Lancaster Road Enfield Middx EN2 0BY  
 Telephone: 0208-366 1271 Fax: 0208-366 7219

Drawing No. PL12/105/P/521  
 Revision

London Borough of Southwark  
 Received on:  
 - 3 FEB 2014  
**14 AP 03 10**  
 Planning Case File